

Display mode : XVGA
Resolution: 1024X768
Formats: 4:3
Vertical Scan Freq : 60Hz
Horizontal Scan Freq : 48kHz



American Display mode:XVGA



INTRODUCTION

INTRODUCTION	02
GUN SYMBOL	03
BONUS GAME	04
DOUBLE-UP GAME	05

SYSTEM SET UP

MESSAGE REMOVAL	06
TEST/SET UP	06
RECORD	10

WIRING DIAGRAM

WIRING DIAGRAM	12
CONTROL PANEL	13
PCB	14

- 1.Huga is an alluring 15-reel 9-line game.
- 2.Select to bet on 1line, 3 lines, 5 lines, 7 lines or 9 lines by pressing the [Line] button.
- 3.Press the [Bet] button to increase the bet or press the [Max Bet] button to maximize the bet on the selected line.
- 4.Press the [Start] button to spin the reels which will stop automatically. Or press the [Stop1]~[Stop5] or [All Stop] to stop corresponding reels.
- 5.Player wins if three or more same symbols link one another along the left or right side on a selected line.
- 6.Press the [Start] button to take win and continue the basic game or press the [Double] to enter the double-up game.
- 7.Press the [Auto] button to turn on or off the auto play mode. However, if the credit points are not enough, the auto play mode is disabled.





GUNS SYMBOL



The wild symbol can substitute for any other symbols!

The wild symbol can substitute for any other symbol!

🔫	🔫	🔫	🔫	🔫	Bonus Game	×3
🔫	🔫	🔫	—	🔫	Bonus Game	×2
—	🔫	🔫	🔫	—	Bonus Game	×2
🔫	🔫	—	—	🔫	Bonus Game	×1
—	—	🔫	🔫	—	Bonus Game	×1

CREDIT PAID 1200 300

LINE 9 BET 20 TOTAL BET 180

HUGA

4	👨	🌿	🐘	🐙	🐟	4
2						2
6						6
8						8
8	🦁	🦁	🔫	🦁	🦁	8
9						9
7	👩	🔫	🐒	🐘	👨	7
3						3
5						5

WIN 180000

If there are three or more  appear in a roll on the left or the right side of the winning line, the player can enter the Bonus Game.

BONUS GAME

BONUS GAME I Hunting



There are 15 hidden places in the forest. Press the [Stop1] button to aim at different target places and press the [Start] button to shoot. The winning points will be certain multiples of the total bet. The multiple will be shown next to the animal that got shot



The player can aim at different target places and continue the hunting until the girl is shot or all animals are shot. If the player hunts all 14 animals, the system enters BONUS GAME II.



DOUBLE-UP GAME

BONUS GAME II Coconut Tree Shaking

There are many coconuts on the tree. The player should keep pressing the [Start] button as fast as possible within the time limit. The monkey will clutch the trunk of the tree and shake. The speed of pressing the [Start] button will appear on the level meter and affect the quantity of the falling coconuts. A player will win the multiple point of each falling coconuts. When time is up, the system will return to the basic game.



After winning each basic game, the player can select to continue the game or enter the double-up game. The double-up is a rock-paper-scissors game. The player plays the game with the dealer by choosing [rock], [paper], or [scissors]. If the player wins, the winning points in the basic game will be doubled up; otherwise, the winning point will be reset to zero and the system will return to the

basic game. If the player draws with the dealer, the winning points will be put aside temporarily. In the following play, the points will be added to the new winning points if the player wins. After each play, the player could select to return to the basic game with the accumulated winning points.

SYSTEM SET UP

Message Removal

When any one of the messages below is shown on the screen, please remove it in the following ways after the corresponding condition is removed :

Messages	Way to Remove the Message
COIN JAM	After resetting error, press the record button to clear the error message.
CREDIT LIMIT	After resetting credit limit, press the keyout button to clear the error message.
HOPPER ERROR	After resetting hopper error, press the keyout button to clear the error message.

TEST/SET UP

Press [SET UP] button when power is ON to enter TEST/SET UP screen:

TEST/SET UP
1.SET UP RECORD
2.IN/OUT SET UP
3.FUNCTION SET UP
4.PASSWORD SET UP
5.RELOAD DEFAULT
6.EVENT RECORD
7.TEST
8.CLEAR THE RECORD
【STOP1】 :MOVE UP 【STOP2】 :MOVE DOWN 【STOP5】 :ENTER 【START】 :EXIT



SYSTEM SET UP

*4.PASSWORD SET UP

ADMINISTRATOR PASSWORD
CHANGE THE ADMINISTRATOR PASSWORD
USER PASSWORD
CHANGE THE USER PASSWORD
PASSWORD TO SPECIAL PAGE : ON / OFF
DEFAULT ADMINISTRATOR PASSWORD:1111
DEFAULT USER PASSWORD:1212

STOP1 :1 STOP2 :2 STOP3 :3 STOP4 :4 START : CANCEL

【STOP1】: MOVE UP 【STOP2】: MOVE DOWN 【STOP3】: OFF 【STOP4】: ON 【STOP5】: ENTER 【START】: EXIT

*5.RELOAD DEFAULT

IF YOU WANT TO RELOAD DEFAULT ,PLEASE PRESS BOTH STOP5 AND HELP TOGETHER,
AND HOLD FOR 5 SECONDS.

●ATTENTION ! AFTER RELOAD DEFAULT,THE MACHINE WILL RETURN TO THE ORIGINAL SET UP !

6.EVENT RECORD

TOTAL EVENT RECORD ▶ LAST 256 TIMES RECORD

IN/OUT METER EVENT RECORD ▶ KEYIN , KEYOUT AND PAYOUT RECORD

GRAND PRIZES RECORD ▶ ALL PRIZES RECORD

【STOP1】 : LAST PAGE 【STOP2】 : NEXT PAGE 【START】: EXIT

7.TEST

Button test

PRESS TO CHECK IF
EACH BUTTON IS ON
AND MARK

COIN	STOP1 /SCISSORS/LINE
STOP2/DOUBLE-UP	STOP3/ROCK/HELP
STOP4/ PAPER	STOP5/BET
NOTE	START/TAKE WIN/ALL STOP
CLEAR	RECORD
SET UP	PAY OUT
TICKET OUT	TICKET NOTCH
HOPPER SW	

【START+HELP】: EXIT

MUSIC TEST ADJUSTMENT SOUND TRACK 1 SOUND TRACK 2 SOUND TRACK 3 SOUND TRACK 4
PRESS STOP5 TO TEST THE SOUND.

【STOP1】 : MOVE UP 【STOP2】: MOVE DOWN 【START】: EXIT

PICTURES TEST PRESS STOP5 TO CONTINUE OR STOP THE TEST

★ TO ENTER THE PAGE, A PASSWORD IS NEEDED.

Ⓢ INCORRECT PASSWORD FOR THREE TIMES CONSTANTLY, PLEASE WAIT FOR 30 MINUTES TO ENTER ANOTHER PASSWORD.

SYSTEM SET UP

Message Removal

When any one of the messages below is shown on the screen,
please remove it in the following ways after the corresponding condition is removed :

Messages	Way to Remove the Message
COIN JAM	After resetting error,press the record button to clear the error message.
CREDIT LIMIT	After resetting credit limit,press the keyout button to clear the error message.
HOPPER ERROR	After resetting hopper error,press the keyout button to clear the error message.

TEST/SET UP

Press [SET UP] button when power is ON to enter TEST/SET UP screen:

TEST/SET UP

- 1.SET UP RECORD
- 2.IN/OUT SET UP
- 3.FUNCTION SET UP
- 4.PASSWORD SET UP
- 5.RELOAD DEFAULT
- 6.EVENT RECORD
- 7.TEST
- 8.CLEAR THE RECORD

【STOP1】 :MOVE UP 【STOP2】 :MOVE DOWN 【STOP5】 :ENTER 【START】 :EXIT



SYSTEM SET UP

TEST/SET UP
1.SET UP RECORD
THE LAST TIME TO RELOAD DEFAULT THE LAST TIME TO CHANGE IN/OUT SET UP THE LAST TIME TO CHANGE RATE SET UP THE LAST TIME TO CHANGE FUNCTION SET UP THE LAST TIME TO TURN ON THE LAST TIME TO CLEAR THE CURRENT RECORD THE LAST TIME TO CLEAR THE RECORD
【START】: EXIT
* 2.IN/OUT SET UP
COIN COIN RATE : 1000 · 500 · 250 · 200 · 100 · 80 · 75 · 60 · 50 · 40 · 30 · 25 · 20 · 15 · 10 · 5 · 4 · 2 · 1 · OFF
NOTE NOTE RATE:1000 · 500 · 250 · 200 · 100 · 80 · 75 · 60 · 50 · 40 · 30 · 25 · 20 · 15 · 10 · 5 · 4 · 2 · 1 · OFF
CLEAR CLEAR RATE: 1000 · 500 · 250 · 200 · 100 · 80 · 75 · 60 · 50 · 40 · 30 · 25 · 20 · 15 · 10 · 5 · 4 · 2 · 1 · OFF
PAY OUT PAY OUT RATE: 1000 · 500 · 250 · 200 · 100 · 80 · 75 · 60 · 50 · 40 · 30 · 25 · 20 · 15 · 10 · 5 · 4 · 2 · 1 · OFF
HOPPER SWITCH HOPPER SWITCH: NO · NC
PAY OUT OPTION PAY OUT OPTION: TICKET DISPENSOR · HOPPER
【STOP1】: MOVE UP 【STOP2】: MOVE DOWN 【STOP3】: + 【STOP4】: - 【START】: EXIT
★ TO ENTER THE PAGE, A PASSWORD IS NEEDED. © INCORRECT PASSWORD FOR THREE TIMES CONSTANTLY, PLEASE WAIT FOR 30 MINUTES TO ENTER ANOTHER PASSWORD.

SYSTEM SET UP

*3.FUNCTION SET UP
GAME RATE : 98 · 97.75 · 97.5 · 97.25 · 97 · 96.75 · 96.5 · 96.25 · 96 · 95.75 · 95.5 · 95.25 · 95 94.75 · 94.5 · 94.25 · 94
DOUBLE UP RATE : 99 · 98.50 · 98 · 97.50 · 97 · 96.50 · 96
MAX BET ← THE RATE INFLUENCES CREDIT LIMIT · MINI BET · BET PER LINE · DOUBLE-UP GAME. MAX BET : 450 · 360 · 270 · 180 · 90 · 45
CREDIT LIMIT ← WHEN EXCEEDS THE CREDIT LIMIT RATE ,WILL SHOWTHE 「CREDIT LIMIT」 MESSAGE. WHEN THE MAX BET IS 450,THE NUMERICAL : NO RESTRICTION · 2000000 · 1000000 · 500000 WHEN THE MAX BET IS 360,THE NUMERICAL : NO RESTRICTION · 1600000 · 800000 · 400000 WHEN THE MAX BET IS 270,THE NUMERICAL : NO RESTRICTION · 1200000 · 600000 · 300000 WHEN THE MAX BET IS 180,THE NUMERICAL : NO RESTRICTION · 800000 · 400000 · 200000 WHEN THE MAX BET IS 90,THE NUMERICAL : NO RESTRICTION · 400000 · 200000 · 100000 WHEN THE MAX BET IS 45,THE NUMERICAL : NO RESTRICTION · 200000 · 100000 · 50000
MINI BET X1 AND X9
BET PER LINE WHEN THE MAX BET IS 450,THE NUMERICAL : 10 · 5 WHEN THE MAX BET IS 360,THE NUMERICAL : 10 · 5 WHEN THE MAX BET IS 270,THE NUMERICAL : 10 · 5 · 3 WHEN THE MAX BET IS 180,THE NUMERICAL : 10 · 5 · 2 WHEN THE MAX BET IS 90,THE NUMERICAL : 5 · 2 · 1 WHEN THE MAX BET IS 45,THE NUMERICAL : 2 · 1
DOUBLE UP ← WHEN "OFF" IS SELECTED, THE ENTRY OF THE DOUBLE-UP GAME IS DISABLED. DIRECT DOUBLE UP ← PRESS "BET" BUTTON TO ENTER DOUBLE-UP GAME DIRECTLY WITH THE MAX BET. DOUBLE UP LIMIT ← AN UPPER BOUND TO DISABLE THE ENTRY OF THE DOUBLE UP GAME WHEN THE WINS EXCEED. WHEN THE MAX BET IS 450,THE NUMERICAL : UNLIMIT · 100000 · 50000 WHEN THE MAX BET IS 360,THE NUMERICAL : UNLIMIT · 80000 · 40000 WHEN THE MAX BET IS 270,THE NUMERICAL : UNLIMIT · 60000 · 30000 WHEN THE MAX BET IS 180,THE NUMERICAL : UNLIMIT · 40000 · 20000 WHEN THE MAX BET IS 90,THE NUMERICAL : UNLIMIT · 20000 · 10000 WHEN THE MAX BET IS 45,THE NUMERICAL : UNLIMIT · 10000 · 5000
DEMO MUSIC COIN → THE SAME WITH IN/OUT SET UP NOTE IN →
TIME SET UP VOLUME ADJUSTMENT
【STOP1】: MOVE UP 【STOP2】: MOVE DOWN 【STOP3】: + 【STOP4】: - 【START】: EXIT
★ TO ENTER THE PAGE, A PASSWORD IS NEEDED. © INCORRECT PASSWORD FOR THREE TIMES CONSTANTLY, PLEASE WAIT FOR 30 MINUTES TO ENTER ANOTHER PASSWORD.



SYSTEM SET UP

*4.PASSWORD SET UP

ADMINISTRATOR PASSWORD
 CHANGE THE ADMINISTRATOR PASSWORD
 USER PASSWORD
 CHANGE THE USER PASSWORD
 PASSWORD TO SPECIAL PAGE : ON / OFF
 DEFAULT ADMINISTRATOR PASSWORD:1111
 DEFAULT USER PASSWORD:1212

STOP1 :1 STOP2 :2 STOP3 :3 STOP4 :4 START : CANCEL

【STOP1】: MOVE UP 【STOP2】: MOVE DOWN 【STOP3】: OFF 【STOP4】: ON 【STOP5】: ENTER 【START】: EXIT

*5.RELOAD DEFAULT

IF YOU WANT TO RELOAD DEFAULT ,PLEASE PRESS BOTH STOP5 AND HELP TOGETHER,
 AND HOLD FOR 5 SECONDS.

● ATTENTION ! AFTER RELOAD DEFAULT,THE MACHINE WILL RETURN TO THE ORIGINAL SET UP !

6.EVENT RECORD

TOTAL EVENT RECORD ▶ LAST 256 TIMES RECORD

IN/OUT METER EVENT RECORD ▶ KEYIN , KEYOUT AND PAYOUT RECORD

GRAND PRIZES RECORD ▶ ALL PRIZES RECORD

【STOP1】 : LAST PAGE 【STOP2】 : NEXT PAGE 【START】: EXIT

7.TEST

Button test

PRESS TO CHECK IF
 EACH BUTTON IS ON
 AND MARK

COIN
 STOP2/DOUBLE-UP
 STOP4/ PAPER
 NOTE
 CLEAR
 SET UP
 TICKET OUT
 HOPPER SW

STOP1 /SCISSORS/LINE
 STOP3/ROCK/HELP
 STOP5/BET
 START/TAKE WIN/ALL STOP
 RECORD
 PAY OUT
 TICKET NOTCH

【START+HELP】: EXIT

MUSIC TEST ADJUSTMENT SOUND TRACK 1 SOUND TRACK 2 SOUND TRACK 3 SOUND TRACK 4
 PRESS STOP5 TO TEST THE SOUND.

【STOP1】 : MOVE UP 【STOP2】: MOVE DOWN 【START】: EXIT

PICTURES TEST PRESS STOP5 TO CONTINUE OR STOP THE TEST

★ TO ENTER THE PAGE, A PASSWORD IS NEEDED.

◎ INCORRECT PASSWORD FOR THREE TIMES CONSTANTLY, PLEASE WAIT FOR 30 MINUTES TO ENTER ANOTHER PASSWORD.

SYSTEM SET UP>>RECORD

Press the [RECORD] button when the power is ON to enter RECORD screen:

RECORD 1

GAME RECORD	
TOTAL RECORD	
POWER ON	CURRENT
COIN IN	
PAYOUT	
NOTE IN	
CLEAR	
MAIN GAME	
TOTAL BET	CURRENT
TOTAL WIN	
GAME TIMES	
WIN TIMES	
BONUS	

STOP1 (LAST PAGE) STOP2 (NEXT PAGE) START (EXIT)
 HELP (CLEAR THE LAST RECORD)

RECORD 2

GAME RECORD	
DOUBLE-UP	
PLAY	CURRENT
WIN	
GAME TIMES	
WIN TIMES	
BONUS GAME I	
ENTER TIMES	CURRENT
WIN	
BONUS GAME II	
ENTER TIMES	
WIN	

STOP1 (LAST PAGE) STOP2 (NEXT PAGE) START (EXIT)
 HELP (CLEAR THE LAST RECORD)



SYSTEM SET UP

RECORD 3



STOP1 (LAST PAGE) STOP2 (NEXT PAGE) START (EXIT)

RECORD 4



STOP1 (LAST PAGE) STOP2 (NEXT PAGE) START (EXIT)

WIRING DIAGRAM AND CONTROL PANEL

COMPONENT SIDE	36PIN	SOLDER SIDE
	1	
	2	
AUDIO OUT	3	AUDIO GND
	4	
	5	
	6	
TICKET OUT SW	7	
TICKET NOTCH SW	8	
START/STOP/TAKE SW	9	
HELP / STOP 3 / ROCK	10	
STOP5 / BET SW	11	
STOP 4 / PAPER	12	
DOUBLE UP / STOP 2	13	
	14	
	15	
LINE / STOP 1 / SCISSORS	16	
	17	
COIN IN	18	NOTE IN
	19	
ACCOUNT SW	20	SETUP/TEST BUTTON
PAYOUT BUTTON	21	CLEAR SW
	22	HOPPER SW
COIN IN METER	23	
NOTE IN METER	24	HOPPER MOTOR
	25	
	26	
PAYOUT METER	27	
CLEAR/TICKET METER	28	
START/STOP/TAKE LAMP	29	
HELP / STOP 3/ROCK	30	
STOP5 / BET LAMP	31	
STOP 4 / PAPER	32	
DOUBLE UP / STOP 2	33	
LINE / STOP 1 / SCISSORS	34	
	35	
GND	36	GND



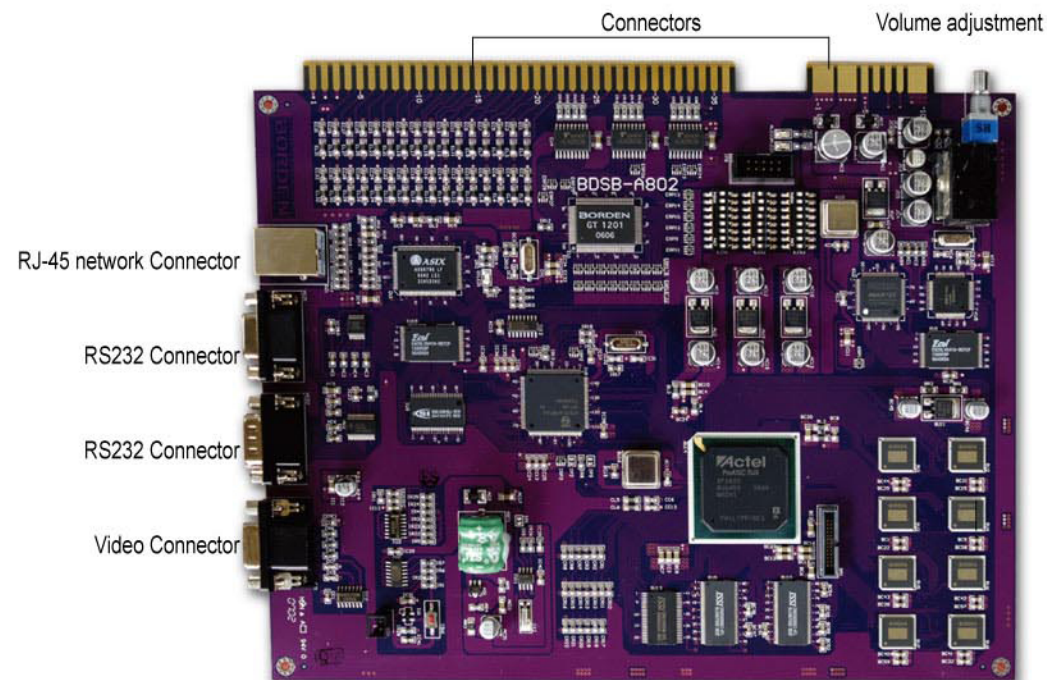
WIRING DIAGRAM AND CONTROL PANEL

COMPONENT SIDE	10PIN	SOLDER SIDE
GND	1	GND
GND	2	GND
5V	3	5V
5V	4	5V
12V	5	12V
NC	6	NC
NC	7	NC
TICKET DISPENSER OUT	8	NC
GND	9	GND
GND	10	GND

CONTROL PANEL



WIRING DIAGRAM AND CONTROL PANEL



★ [AUTO MODE] will start by pressing the [AUTO] button to keep the game playing automatically, until [AUTO] is repressed.